

Your ICT Visit and Plan for Care

Patient Name:

Name & Job Title of Your Visiting Clinician:

Agreed Actions From Your Visit Today:

-
-
-
-
-

Other Notes:

Date of Next Contact (telephone or visit):

If you or your carer's have questions you can contact us on the following number:

Tel No:

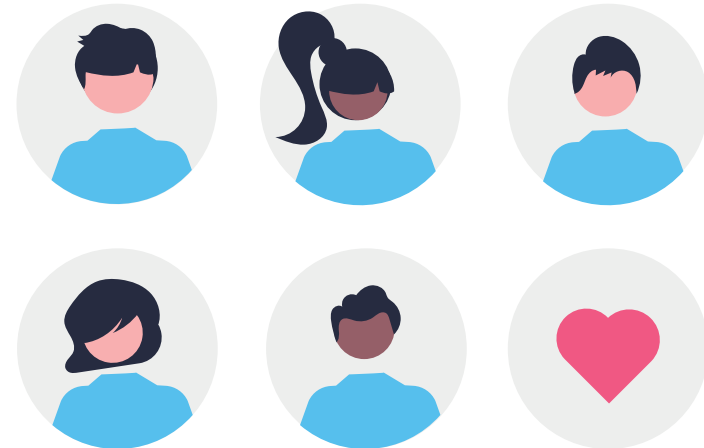
Service Hours:

If your needs become more urgent, please contact your GP Practice, 111 or 999 as appropriate



Integrated Care Caring for You

A guide for Patients, Families & Carers



Other Partners: Hampshire County Council, Hampshire Fire and Rescue; Inclusion Recovery Hampshire; Hart District Council; Rushmoor Borough Council; British Red Cross

Integrated Care Approach: What can I expect?

Why have I been referred?

You have been referred to your local Integrated Care Team because you may benefit from some coordinated support from services within the community. Your referral to the ICT would have been discussed with you by one of the clinicians looking after you.

What is an Integrated Care Team (ICT)?

An ICT is a group of professionals who work together to support people with a range of needs which may include health or social support for example. There are five ICT teams located across Aldershot, Farnborough, Fleet, Farnham and Yateley.

What can I expect?

1. The team will work with you to identify what matters to you about your care and any current or future support you may require
2. Where appropriate, a clinician within the ICT may complete an assessment, covering a range of areas e.g. health, social, environmental
3. We will discuss with you if any other services could help and refer you to these services as required
4. Your care and input from any service will be managed and coordinated by the ICT
5. You will be on our teams caseload for a period of time; until your needs are being satisfactorily met by services

It will be necessary to discuss your case at an ICT meeting to ensure that the most appropriate teams are involved in your care, as well as to enable effective communication between services (a list of organisations in attendance at the meeting can be found in the accompanying table).

What are the benefits of an Integrated Approach?

- You will only need to tell your story once;
- Care in, or close to, your home to suit your needs;
- You/your carer will have more control over your care and support
- A better experience of health and social care services



Who are the ICT?

The organisations involved may differ depending on the area where you live and the support you need. The organisations who make up our team are listed below:

Aldershot, Farnborough, Fleet & Yateley	Farnham Services
<ul style="list-style-type: none">- Salus Medical Services (ICT Team)- Frimley Health Foundation Trust (Community Nurses and Therapy Team)- Hampshire County Council (Social Services)- Surrey and Borders Partnership (Mental Health Team)- Social Prescribing Link Worker- Red Cross (Voluntary Organisation— Adult Wellbeing Support)	<ul style="list-style-type: none">- Farnham Integrated Care Services GP (ICT Team)- HCRG Care Group (Community Nurses & Therapy Team)- Surrey County Council (Social Services)- Surrey and Borders Partnership (Mental Health Team)- Social Prescribing Link Worker

How will my information be used or shared?

For your direct patient care, we may refer you to other services within the community outside of the NHS, for example to Adult Social Care. Referrals of this nature will always be discussed with you first. When the ICT team meet, we will review records from your GP practice or Community Provider to help us plan how we can support you. This information will only ever be discussed for the benefit of your health or social care needs.

We will only share your information for NHS research and planning purposes with your explicit consent. We may ask you about this when we visit or your GP may discuss this with you when they refer you to our team. If you do not wish for your information to be shared in this way, you have the right to refuse. If you consent, the data is provided to our local NHS Commissioners so they can evaluate our input and its benefits to patients in the community. The data provided will not identify you as a patient. We do not share data for any other purposes.

More information

Would you like more information about the ICT and how your data is shared for your care? Ask your clinician for our detailed information sheet

Do you need this leaflet in a different format?

Please ask your visiting clinician